

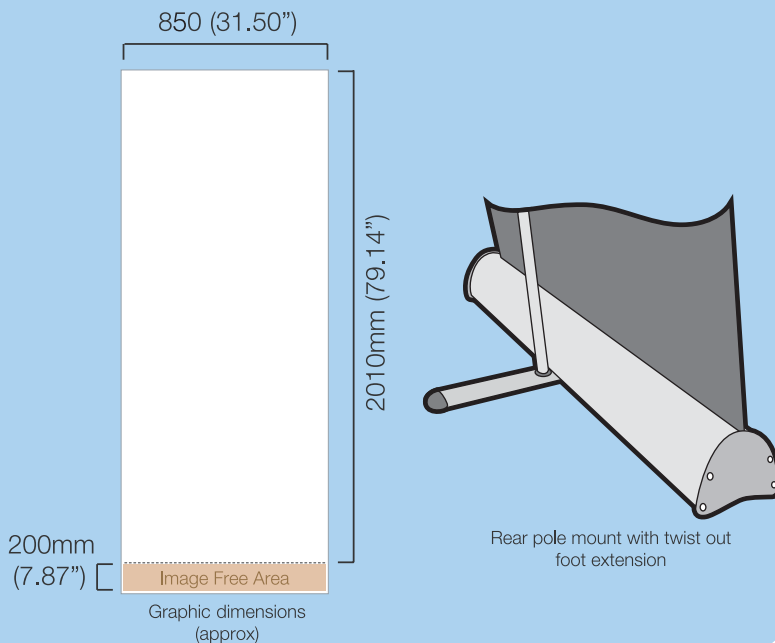
ComLite

GRAPHICS DISPLAY SYSTEM

A lightweight economy roller banner with slim base and bungee pole making it very compact, complete with a twist out foot for extra stability.

Features & Benefits:

- Lightweight components
- Reusable spring loaded rail clamp system for easy graphic application
- Twist out stabilising foot for extra stability
- 850mm graphic width
- Includes quality padded carry bag



Hardware Specifications:

Hardware Dimensions (mm):

2110 (h) x 830 (w) x 445 (d) approx.
83.10" (h) x 32.70" (w) x 17.52" approx.
(Depth dimension refers to twist out foot)

Weight:

2.5kg (5.5lbs) approx
(including carry bag)

Graphics Specifications:

Visible Graphic Dimensions (mm):

2010 (h) x 850 (w) approx
79.14" (h) x 31.50" (w) approx

Substrate:

Add 200mm (7.87") to base of graphic to allow for roller mechanism.
Recommended material thickness
225 - 300 Microns (8.86 - 11.81 Mills)

Additional:

Included in kit:

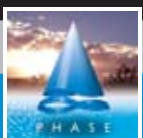
Top rail, base, bungee pole set and carry bag

Colour of base:

Anodised silver

Exclusive to PHASE

Tel: 01773 764288
www.phaseprint.com



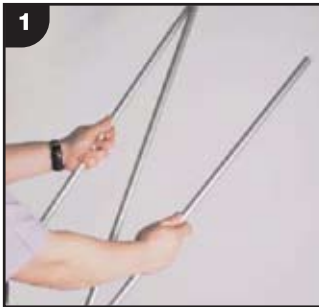
ComLite

GRAPHICS DISPLAY SYSTEM

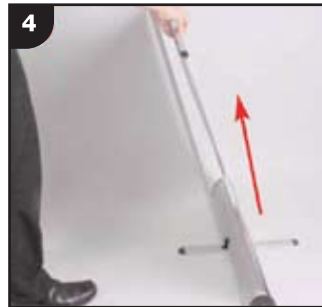
Assembly Instructions



Kit includes: Top rail, base, bungee pole set and carry bag



1 Assemble the bungee pole set.



4 Lift the top rail to raise the graphic from the base.



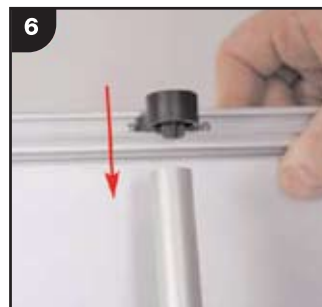
2 Open out the stabilising foot.



5 Lean the banner stand backwards and continue to extend the graphic.



3 Fit the bungee pole into the stabilising foot.



6 Secure the top rail cup onto the bungee pole.

Caution: Hold the Top rail whilst lowering the banner, (do not drop) to prevent damage to the graphic.

Exclusive to PHASE

Tel: 01773 764288
www.phaseprint.com

